

# Installing Crystal Reports

---

This chapter shows you how to install Crystal Reports locally from the product CD. It also describes how to install Crystal Reports to a network server, and how to install from a network server to a workstation machine.

## Installing Crystal Reports

The Crystal Reports Installation Wizard works with Microsoft Windows Installer to guide you through the installation process. The Installation Wizard automatically recognizes your computer's operating system and updates files as required.

This chapter provides step-by-step instructions for installing Crystal Reports and shows how to customize your installation. The main topics are:

- [Installation requirements](#)
- [Installing on a local machine from CD](#)
- [Installing to and from a network server](#)
- [Customizing your installation](#)

As one of the final steps in the installation process, you'll be asked if you want to register the product. Follow the on-screen instructions to complete this process.

## Installation requirements

### Local installation (from CD) requirements

- Microsoft Windows 98 (Second Edition), NT 4.0, 2000, Me, XP.
- Minimum RAM: 32 MB (64 MB for Windows NT).
- Recommended RAM: 64 MB.
- Minimum hard drive space required (all editions): 60 MB.
- Maximum hard drive space required: 350 MB.

We also recommend having an additional 100 MB of free disk space on your C: drive for use by Windows during the installation. If your system does not meet these requirements, the program may not run correctly.

**Note:** Check the Release Notes on the Crystal Reports CD for the most recent installation requirements.

### Network installation requirements

- Microsoft Windows 98 (Second Edition), NT 4.0, 2000, Me, XP.
- Minimum RAM: 32 MB (64 MB for Windows NT).
- Recommended RAM: 64 MB.
- Typical hard drive space required on a network server: 217 MB.
- Typical hard drive space required on a workstation: 105 MB.

We also recommend having an additional 100 MB of free disk space on your C: drive for use by Windows during the installation. If your system does not meet these requirements, the program may not run correctly.

**Note:** Check the Release Notes on the Crystal Reports CD for the most recent installation requirements.

## Installing on a local machine from CD

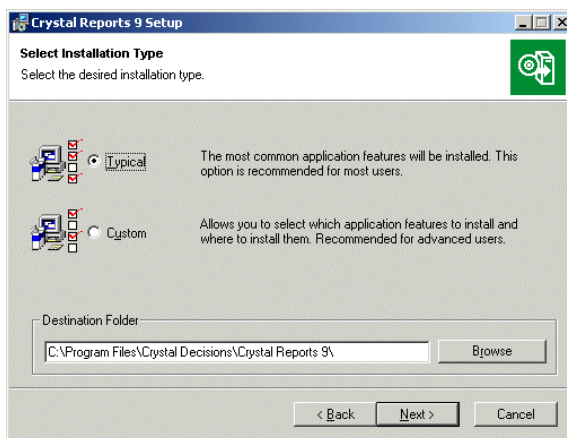
If you are installing Crystal Reports on a computer running Windows NT, Windows 2000, or Windows XP, you must have Administrator privileges. The installation process creates registry entries and may update some system files that require Administrator rights.

Close all currently running programs and stop as many services as possible when installing Crystal Reports.

If you want to limit the features you install, see “[Customizing your installation](#)” on page 6.

### To install on a local machine

- 1 Insert the Crystal Reports CD and, if the CD does not start automatically, browse to your CD-ROM drive and double-click **Setup.exe**.  
**Note:** Depending on the configuration of your current system, you may receive a dialog box informing you to update existing files. If this happens, click Yes and restart your machine. The Installation Wizard updates the required files.
- 2 Read and accept the License Agreement to proceed with the installation.
- 3 In the User Information dialog box, type your name, organization, and the Product Key Code.  
**Tip:** The Product Key Code is printed on the sticker on the back of the CD envelope.
- 4 Click **Next**.  
 The Select Installation Type dialog box appears.



- 5 Choose the type of installation that you want to perform:
  - **Typical** installs the most common application features.

- **Custom** enables you to choose the features that you want installed, to specify where they will be installed, and to check the disk space required by each feature. For details, see “[Customizing your installation](#)” on page 6.
- 6 Click **Browse** if you want to install Crystal Reports to a directory different from the default location.  
The default is C:\Program Files\Crystal Decisions\Crystal Reports 9\  
7 Click **Next**.  
The Start Installation dialog box appears.
- 8 Click **Next** to begin copying files to your local drive.

## Installing to and from a network server

A network installation of Crystal Reports involves two steps:

- 1 Run the Administrator’s installation to copy files to a server machine on the network. See “[Installing Crystal Reports to a network](#)” on page 4.
- 2 Access the server machine from a workstation, and run Setup.exe to install Crystal Reports on the workstation. See “[Installing Crystal Reports from a network](#)” on page 5.

## Installing Crystal Reports to a network

This procedure must be performed by a network administrator who has write access and network privileges. When this procedure is complete, end users will be able to access Setup.exe from the network to install Crystal Reports onto their local machines.

If you are installing Crystal Reports on a computer running Windows NT, Windows 2000, or Windows XP, you must have Administrator privileges. The installation process creates registry entries and may update some system files that require Administrator rights.

Close all currently running programs and stop as many services as possible when installing Crystal Reports.

**Note:** If users do not have the Microsoft Windows Installer configured on their machines, the setup process detects the workstation’s operating system and installs the appropriate Microsoft Windows Installer package.

### To install Crystal Reports to a network

- 1 Initialize the Administrator’s installation by running **Setup.exe** with the additional command line switch **/a**.

For example, click the Start button, click Run, and type:

```
<path> Setup.exe /a
```

where <path> is the location of the Crystal Reports setup program.

- 2 In the Admin Installation dialog box, click **Browse** to choose the network location where you want to install the Crystal Reports files.
- 3 Click **Next**.
- 4 In the Admin Installation verification dialog box, click **Next** to begin copying the files to the network.  
When the files have finished copying to the network, users can double-click Setup.exe to begin the installation.

## Installing Crystal Reports from a network

If your network administrator has installed Crystal Reports to the network, make sure you have read privileges to that network before beginning this process.

If you are installing Crystal Reports on a computer running Windows NT, Windows 2000, or Windows XP, you must have Administrator privileges. The installation process creates registry entries and may update some system files that require Administrator rights.

Close all currently running programs and stop as many services as possible when installing Crystal Reports.

### *To install Crystal Reports from a network*

- 1 Access the network server that contains the Crystal Reports installation files.
- 2 Double-click **Setup.exe**.  
**Note:** Depending on the configuration of your current system, you may receive a dialog box informing you to update existing files. Click Yes and restart your machine. The Installation Wizard updates the required files.
- 3 Read and accept the License Agreement to proceed with the installation.
- 4 In the User Information dialog box, type your name, organization, and the Product Key Code.  
**Tip:** You may need to contact your Administrator for the Product Key Code.
- 5 Click **Next**.  
The Select Installation Type dialog box appears.
- 6 Choose the type of installation that you want to perform:
  - **Typical** installs the most common application features.
  - **Custom** enables you to choose the features that you want installed, to specify where they will be installed, and to check the disk space required by each feature. For details, see [“Customizing your installation” on page 6](#).

**Note:** If you want to install certain features so they run from the network, choose the Custom installation.

- 7 Click **Browse** if you want to install Crystal Reports to a directory different from the default location.

The default is C:\Program Files\Crystal Decisions\Crystal Reports 9\

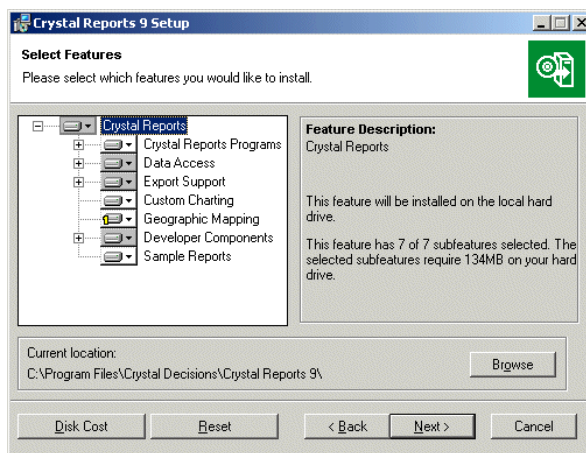
- 8 Click **Next**.

The Start Install dialog box appears.

- 9 Click **Next** to begin copying files to your local drive.

## Customizing your installation

Selecting the Custom installation option invokes the Select Features dialog box, which allows you to install specific features, to change the default location of various features, and to check the amount of disk space required by each feature.



The icons in the feature tree indicate whether the feature and its subfeatures will be installed or not:

- A white icon means that the feature and all its subfeatures will be installed.
- A shaded icon means that the feature and some of its subfeatures will be installed.
- A yellow 1 means that the feature will be installed when required (installed on demand).
- A red X means that the feature or subfeature is either unavailable or will not be installed.

Crystal Reports uses an “install on-demand” technology for some of its features. As a result, the very first time a particular feature is used after being installed, there may be an extra wait for the “install on-demand” to complete. This behavior will affect new installations only once and will not occur when features are restarted.

To select the configuration and location of a feature or subfeature, click its icon.

**Note:** Each feature or subfeature can have its own configuration and location.

Use the following table to determine your installation options for each feature or subfeature:

Type of feature installation	Description of what is installed
Will be installed on local hard drive	<ul style="list-style-type: none"> <li>• Installs the feature on the local hard drive.</li> <li>• Uses the Typical install settings to install some of the feature's subfeatures to the local hard drive.</li> </ul>
Entire feature will be installed on local hard drive	<ul style="list-style-type: none"> <li>• Installs the feature and all of its subfeatures on the local hard drive.</li> </ul>
Will be installed to run from CD/network	<ul style="list-style-type: none"> <li>• Runs the feature and its Typical subfeatures off the CD/network.</li> </ul> <p><b>Note:</b> Some subfeatures are not set up to run from the CD/network. These subfeatures will be installed on your local hard drive.</p>
Entire feature will be installed to run from CD/network	<ul style="list-style-type: none"> <li>• Runs the feature and all of its subfeatures off the CD/network.</li> </ul> <p><b>Note:</b> Some subfeatures are not set up to run from the CD/network. These subfeatures will be installed on your local hard drive.</p>
Feature will be installed when required	<ul style="list-style-type: none"> <li>• Installs the feature or subfeature from the CD/network when first used.</li> </ul>
Entire feature will be unavailable	<ul style="list-style-type: none"> <li>• Neither the feature nor its subfeatures are installed.</li> </ul>

**Note:** Subfeatures are listed below each feature. A subfeature can have a different type of installation than its parent feature.

